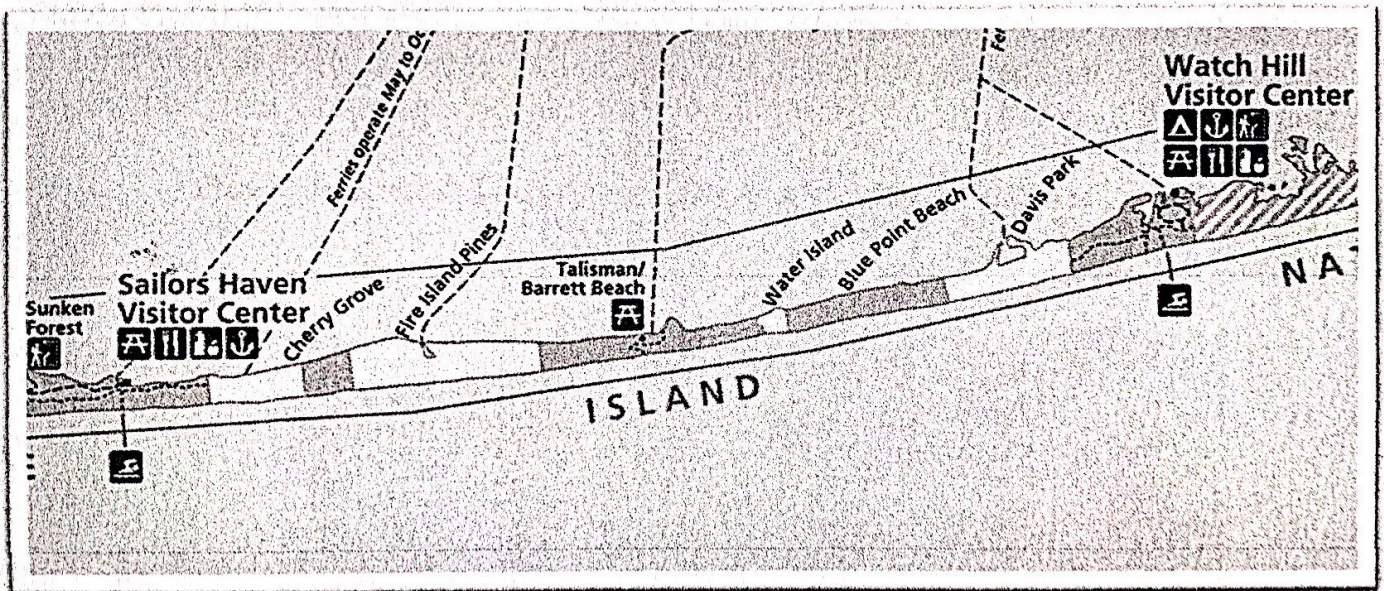


Welcome Aboard!

Bayport Blue Point Heritage Association's

Fire Island Sunset Cruise

Watch Hill to Sailor's Haven



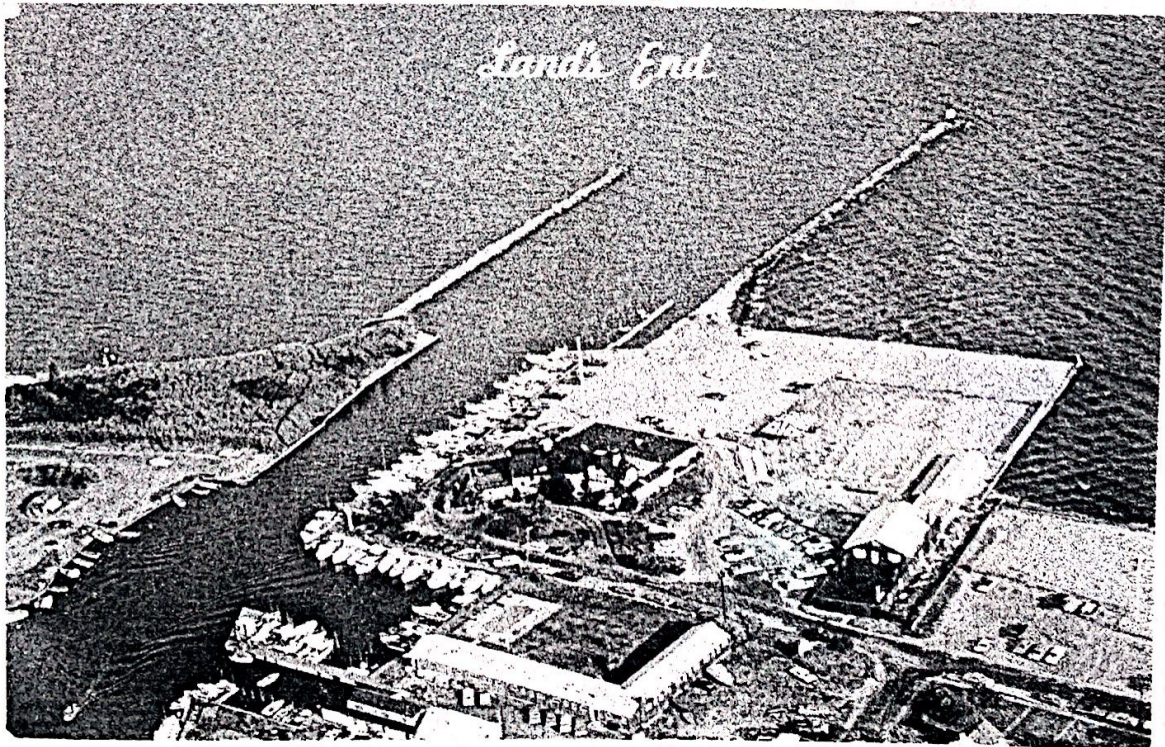
Co-Anchored by John Amato and Frank Giebfried

Thanks to Gene Horton for developing this brochure!

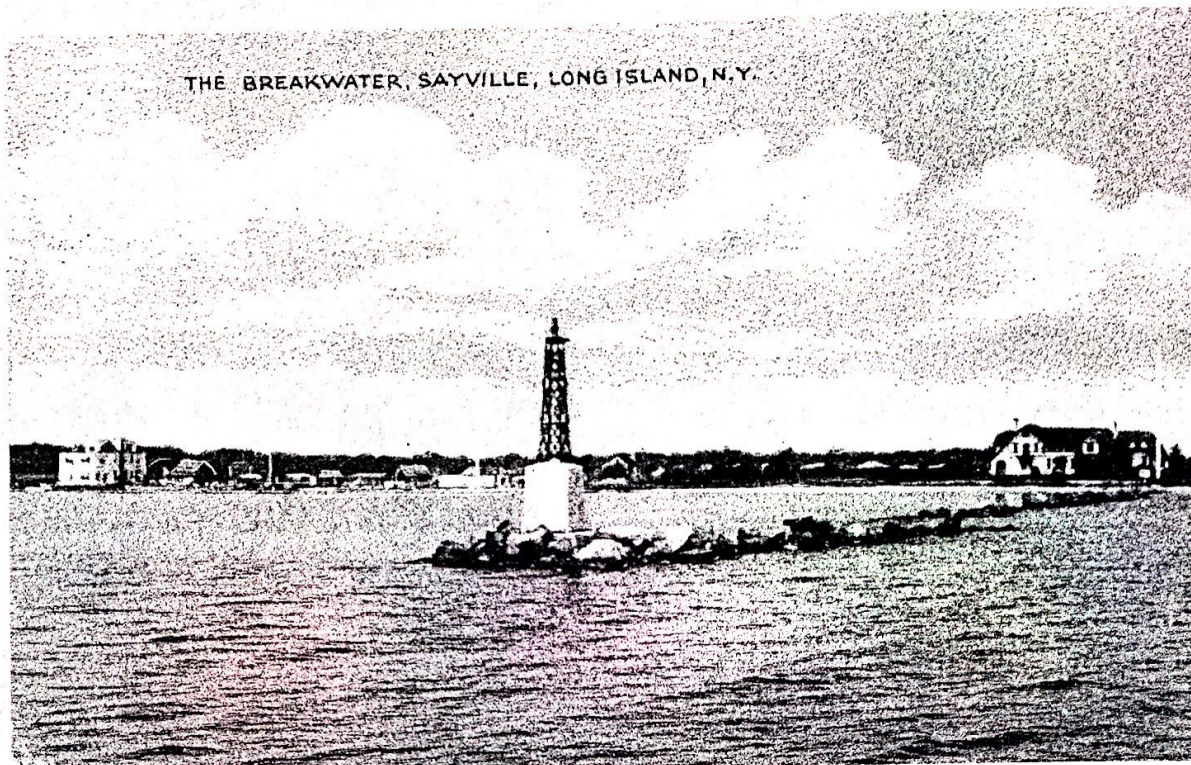


Land's End Restaurant was formerly the home of Northam Warren, a Connecticut pharmacist who, in 1916, developed Cutex, the first liquid nail polish and polish remover and headed the Cutex Company. Warren built this home on the bay-Brown's River point in 1923.

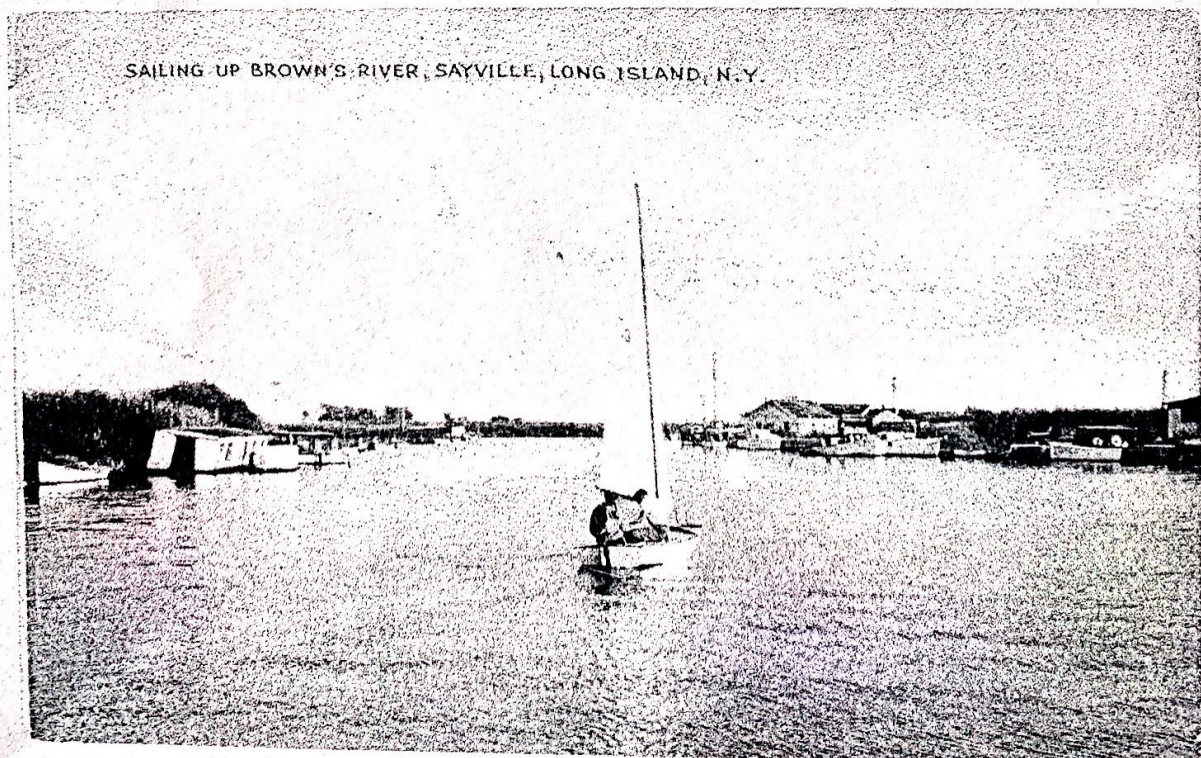
Photograph, c.1950, from the collection of Sayville Library.



Aerial view of Land's End a number of years ago; the swimming pool is gone today.



The first BREAKWATER at the mouth of Brown's River was constructed in 1903. This is the way it looked about fifty years ago. Land's End is seen in the background.



BROWN'S RIVER...YEARS AGO

FIRE ISLAND...

also known as: **THE GREAT SOUTH BEACH**
or **THE BARRIER BEACH**

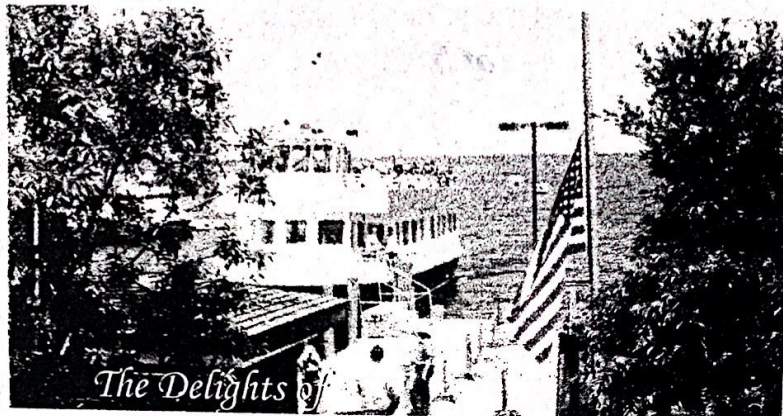
FIRE ISLAND: the thin barrier between the Atlantic Ocean and the Great South Bay... 32 miles long...extends from the Moriches Inlet on the east...to Fire Island Inlet to the west. On Fire Island, there are 17 distinct communities. Brookhaven Town extends all the way to the middle of Seaview.

In 1964 Congress declared 26 miles of Fire Island as part of the National Park System; *FIRE ISLAND NATIONAL SEASHORE (FINS)* is the only federally-designated wilderness area in New York State.

The 1,300 acre Otis Pike Wilderness Area, established in 1980, stretches for 8 miles, from Watch Hill eastward to Smith Point. Here visitors can sense what Fire Island looked like hundreds of years ago. Today there are ranger stations, back-packers, camping areas, and all sorts of white-tailed deer, red fox, & many species of birds...along with such natural vegetation & trees such as holly, sassafras, black cherry and black gum.



SAILORS HAVEN... The gateway to the Sunken Forest the "Jewel in the Crown" of FINS....A Visitor's Center with beach & Sunken Forest exhibits, artifacts, information & publications dealing with Fire Island. Extremely knowledgeable Park rangers do guided tours and lectures...42-foot boat marina; snack bar; souvenir shop, picnic tables, outdoor grills...Magnificent views of the Great South Bay...There is a lifeguard-protected ocean beach & restroom facilities. Ferry service from Sayville.



Sailors Haven

SUNKEN FOREST... This is Fire Island's nature sanctuary...a visit to another world. Sunken Forest is one of the last remaining maritime forests on the eastern seaboard... 40 acres...American holly, sassafras, tupelo, red cedar, post oak, cat briar, and poison ivy! Some of the trees in Sunken Forest are over 200 years old. The Sunken Forest is NOT below sea level. It is barely above sea level, but it developed behind the line of secondary dunes & thus appears to be 'sunken' beneath the tops of the sand dunes. Sunlight peeks through the overhead growth...the ground tends to be wet & marshy... deer, raccoons and song birds are at home here. The National Park Service acquired Sunken Forest in 1966.



Sunken Forest



CHERRY GROVE... The history of Cherry Grove dates back to the 1880's when Arthur Perkinson opened a small establishment & restaurant here. He called the place "Cherry Grove" because of all its wild cherry trees... no cherry trees here today thanks to the 1938 hurricane.

In 1922, a seasonal post office opened here.

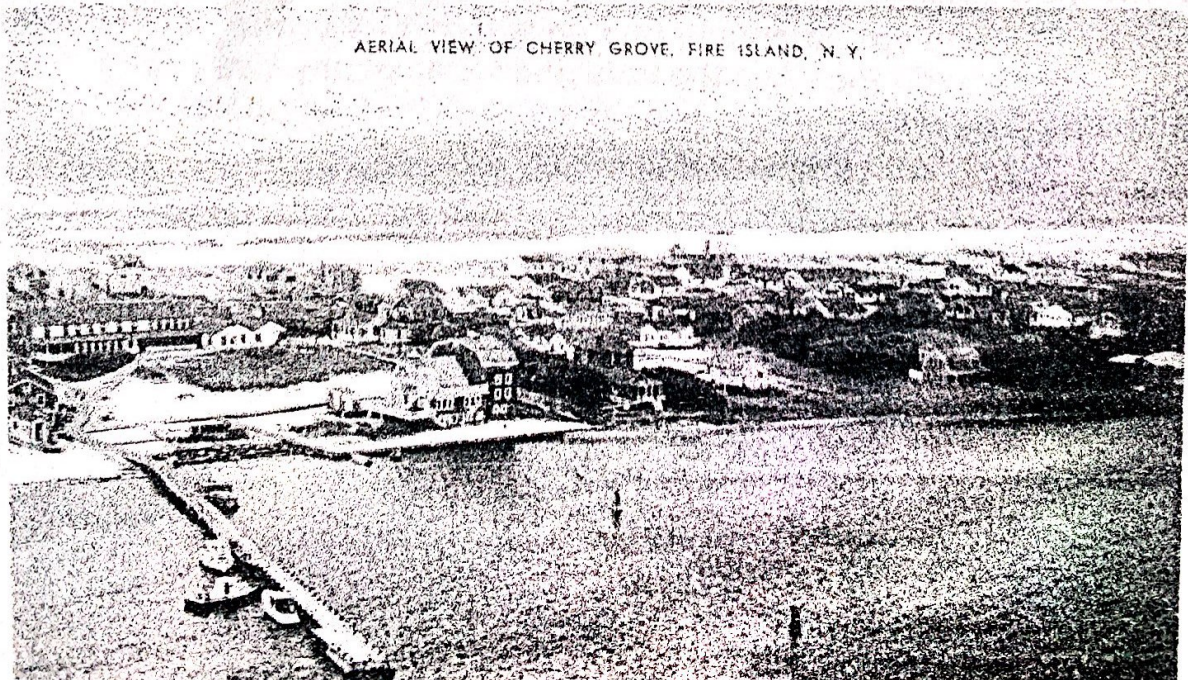
Today, Cherry Grove is well known as a gay & lesbian resort community, but not exclusively so ("Tides of Change at Cherry Grove," Newsday; July 17, 2005).

According to a July 15, 2005, article in The New York Times: Cherry Grove covers an area of 41 acres... there are about 300 homes in Cherry Grove...its population is about 15 in winter and approximately 2,000 in summer...and the median cost of a house here is \$850,000.

One of its most remarkable bayside structures is the Belvedere, a guest house for men, which was built in 1956.

Shops, restaurants, clubs, theatre, art shows, hotels, bars; whimsical house styles and house names, all make The Grove a special place on Fire Island.

Every Fourth of July weekend, since 1976, a contingent of Grovers, in their most flamboyant attire, 'invades' Fire Island Pines.

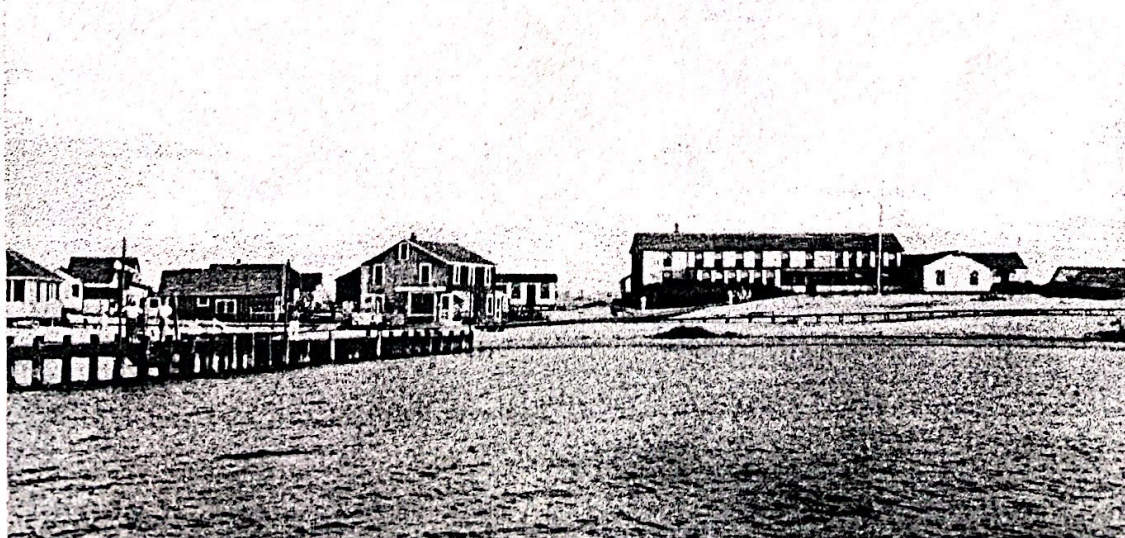


AERIAL VIEW OF CHERRY GROVE, FIRE ISLAND, N. Y.

WEST END BUNGALOW SECTION, CHERRY GROVE, NEW YORK.

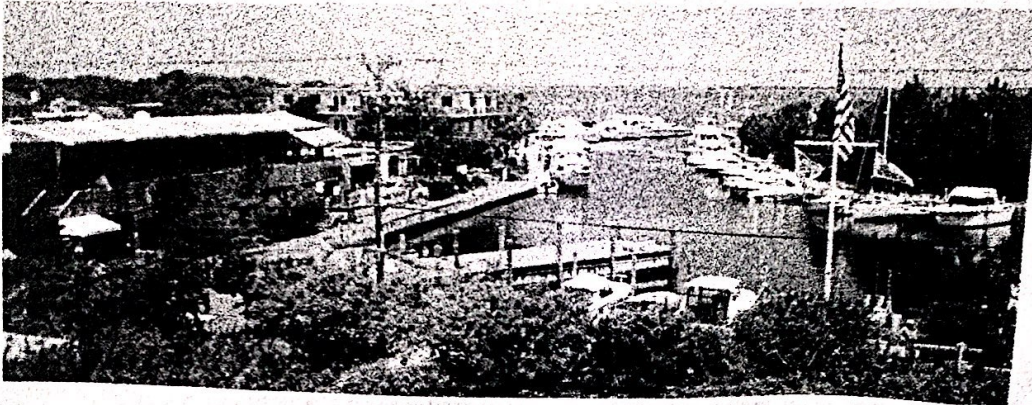


VIEW OF CHERRY GROVE, N.Y.



3 POSTCARD VIEWS OF CHERRY GROVE YEARS AGO

FIRE ISLAND PINES... This was originally the site of the Lone Hill Life Saving Station which was built in 1872. Fire Island Pines is considered to be one of, if not THE most beautiful & architecturally stunning communities on Fire Island....Roller-coaster walkways... arching dense pines & trees... privacy...spacing between the homes, all make "The Pines" the unique place that it is.



The Harbor at Fire Island Pines

In 1925, the Home Guardian Company purchased this land from the Sammis family.

Fire Island Pines was developed in the 1950's as a residential community. Electricity arrived here in 1960. There are several hundred homes here and this community is very popular with celebrities. There is a good selection of shops, restaurants & nightlife.

The Harbor at Fire Island Pines is reminiscent of Venice & its Grand Canal. There are slips for about 85 yachts & boats. There was also a landing spot here for seaplanes. Its three-level 'Botel" and a 100-unit complex of co-op apartments is unique among Fire Island Communities. Today, Fire Island Pines has the most land area of any Fire Island community, the most homes, and the most swimming pools.

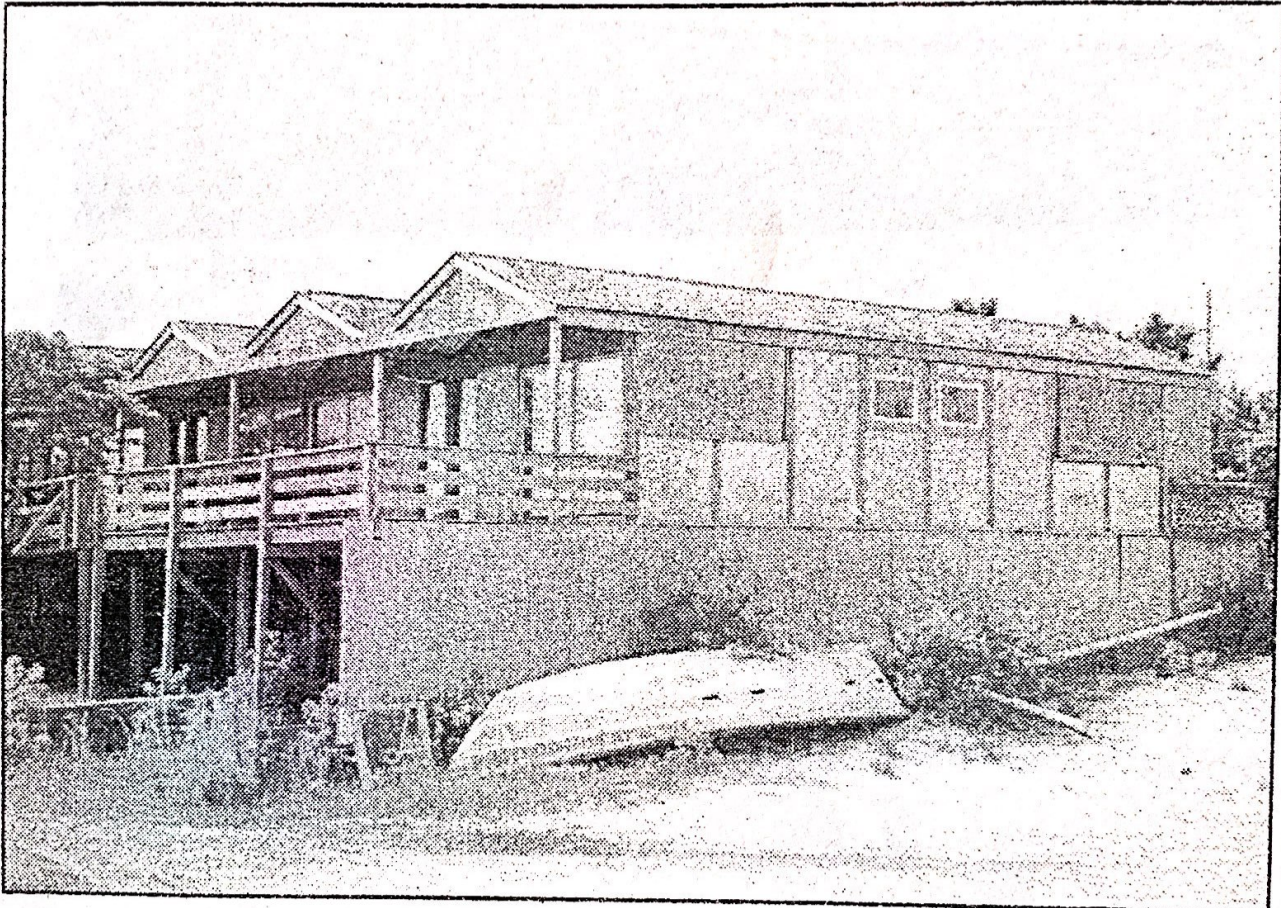


TALISMAN/BARRETT BEACH... Talisman is located in the center of Fire Island National Seashore...between Water Island and a mile east of Fire Island Pines.

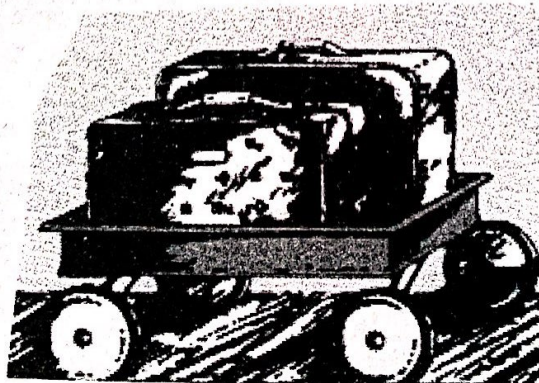
Talisman came into being in 1960 as a private enclave and an elite beach resort. It served as a place of escape for the rich & famous.

But this community was to be short-lived. It was swallowed up by the creation of FINS in 1964 and is gone today.

Barrett Beach was donated to FINS by the Town of Islip in 1998. There are picnic facilities at Barrett Beach but no ferry service to the mainland.



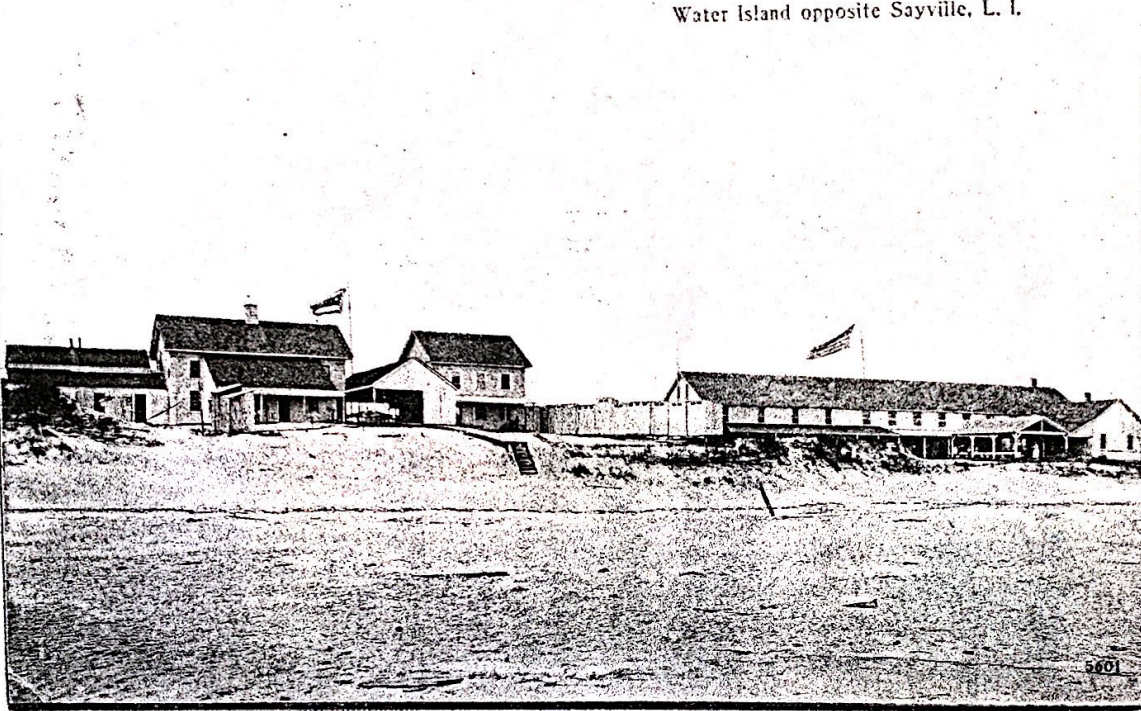
The deteriorated "cabanas" at Talisman no longer hint at the spectacular lifestyle that briefly existed.



WATER ISLAND... is situated on one of the narrowest parts of Fire Island...between Blue Point Beach and Talisman... **AND** Water Island is NOT an island; it is very much a part of Fire Island. Water Island is a small, very private community made up of about 40-50 houses.

In the 1890's, the White House Hotel opened here. The first houses arrived by barge to Water Island c. 1905. Theodore Roosevelt was a frequent visitor. In the 1920's, during Prohibition, the White House Hotel became a haven for illegal activities and a speakeasy: rumrunners, gamblers, and slot machines. Liquor was openly available & consumed by thirsty mainlanders from 'dry' Long Island.

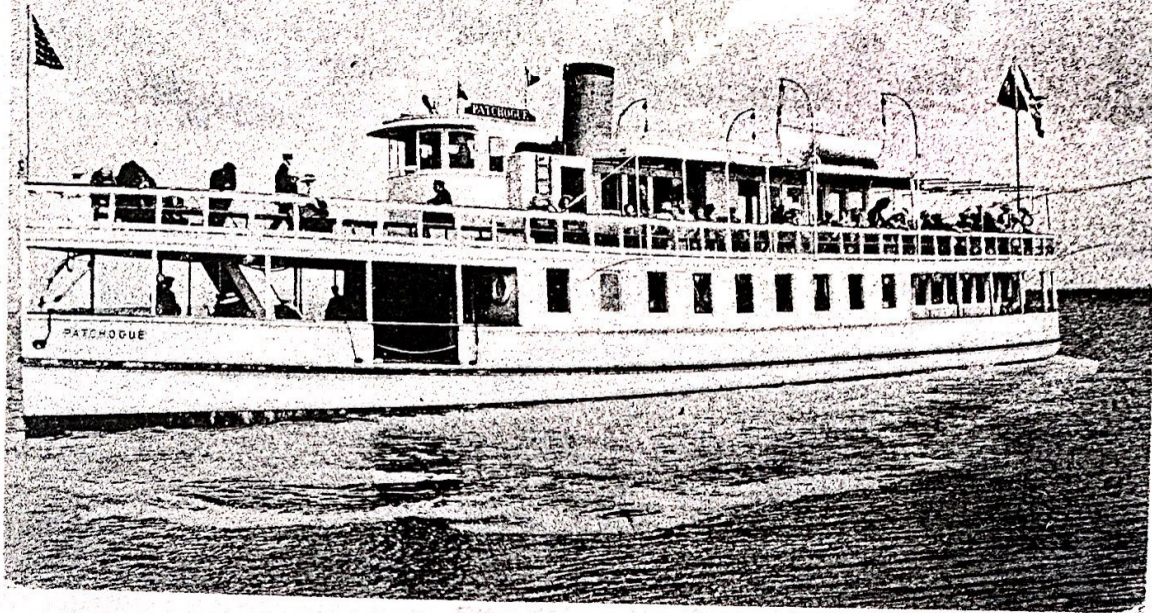
Water Island opposite Sayville, L. I.



This old postcard view of Water Island shows the White House Hotel, c. 1905.



Steamer Patchogue, between Patchogue, Blue Point, and Water Island, N. Y.



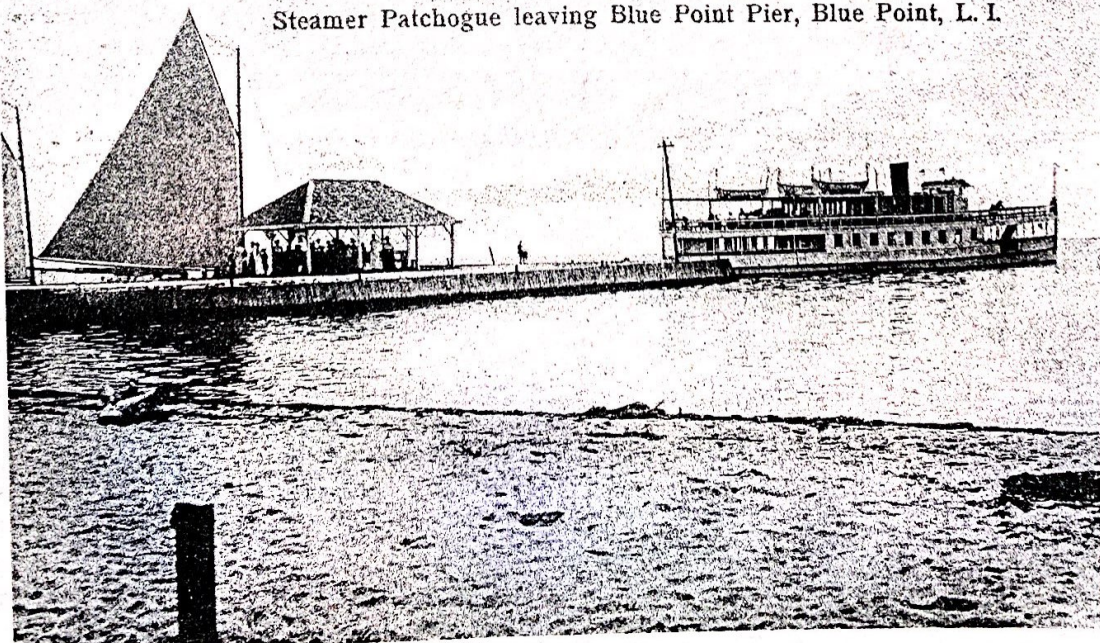
In 1912, there was regular ferry service between Patchogue, Blue Point and Water island.

With the Great Depression of the 1930's and the Repeal of Prohibition, this era ended at Water Island. The White House Hotel was torn down.

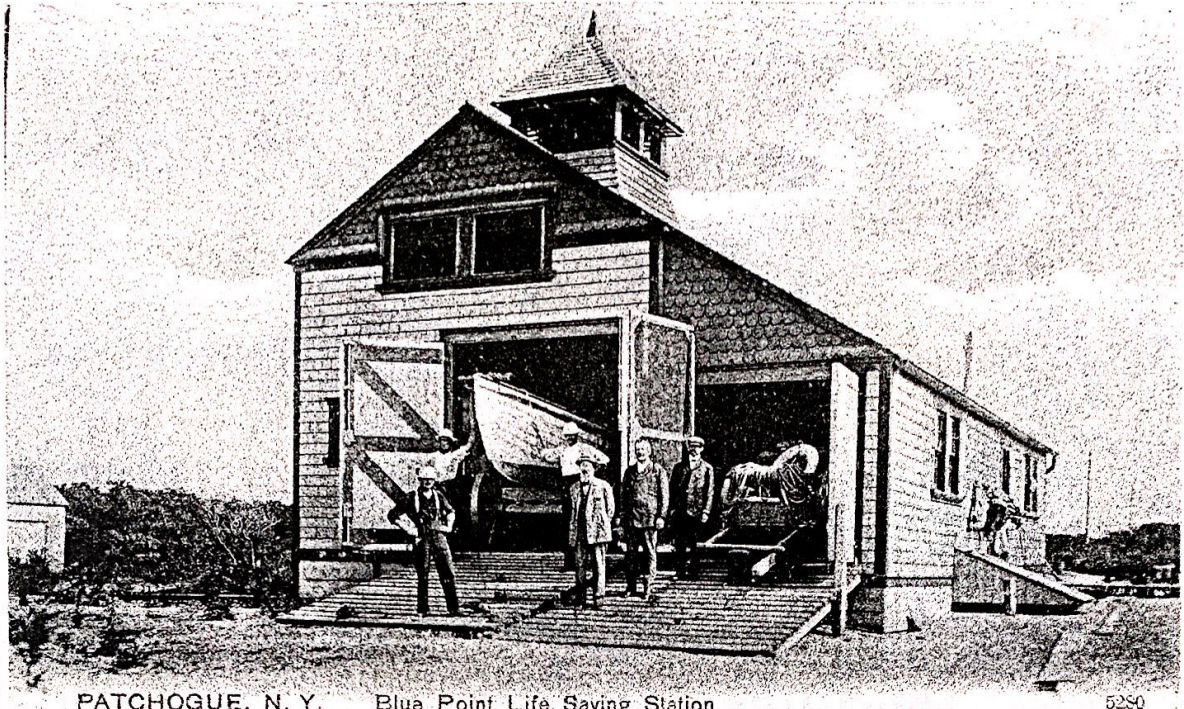
Present day Water Island emerged in the 1950's as a stable, peaceful community of cottagers. In 1970's electricity arrived. Today Water Island is known as a place of solitude & relaxation.

There are no facilities for visitors, no stores, no ferry service to the mainland.... And only one public telephone located by the dock.

Steamer Patchogue leaving Blue Point Pier, Blue Point, L. I.



BLUE POINT BEACH...



PATCHOGUE, N. Y. Blue Point Life Saving Station.

5290

Blue Point Beach is named for the Blue Point Life Saving Station that once stood here. The old Life Saving Station shown in this picture was built in 1913. The station was declared inactive in 1944. Blue Point Beach is located between Water Island and Davis Park. It is an obscure and isolated Fire Island settlement consisting of about 14 homes today. There are no visitor's facilities here.



This photo, taken in the late 1940's, shows the Blue Point Coast Guard Station being moved by Davis Bros. to the Fire Island Summer Club near Corneille Estates on Fire Island.

A SUMMER ON FIRE ISLAND

On The Atlantic Ocean

OPPOSITE PATCHOGUE, L. I.

COMMUTER FERRY SERVICE
COTTAGES AND HOUSES
FOR SALE OR RENT

FOR INFORMATION PHONE

Davis Park Ferry Co.
Blue Point 1617

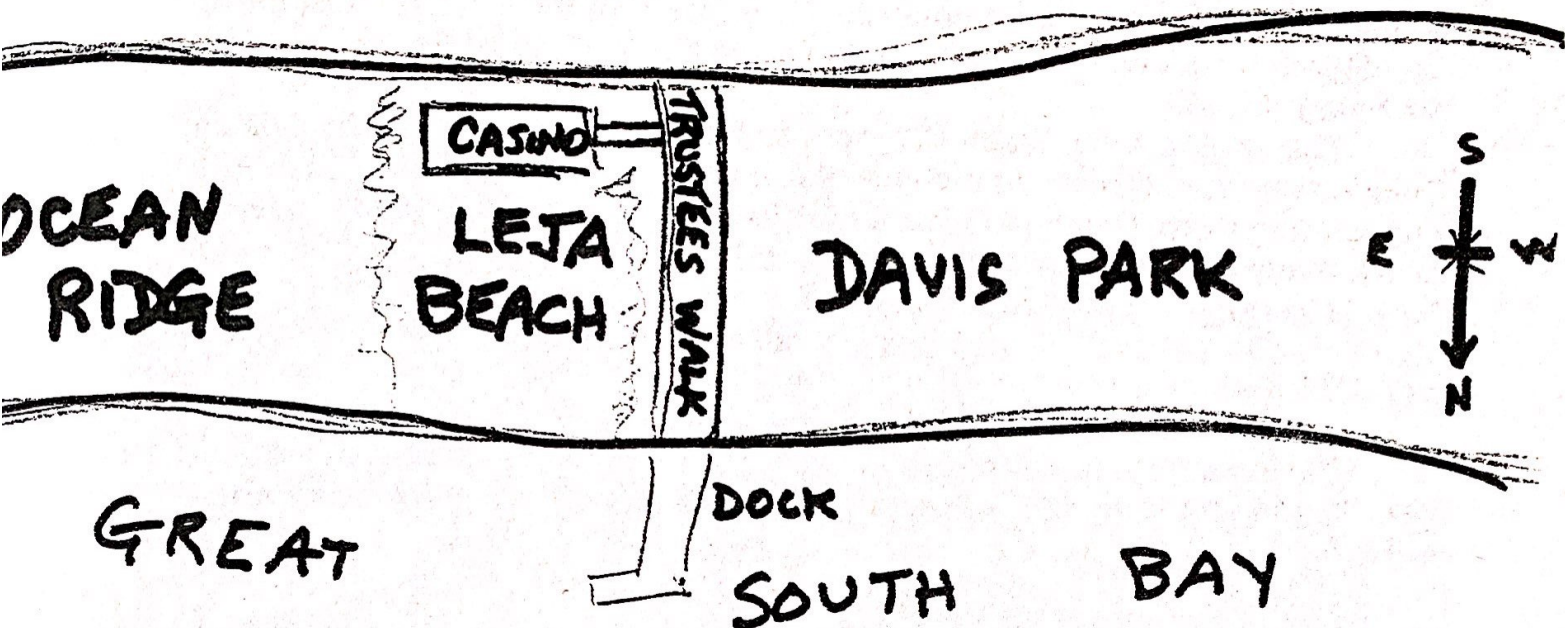
A. & D. Blakeslee
Patchogue 3500

H. LeCluse
Blue Point 1494

J. E. Gerard
Patchogue 1665

ATLANTIC

OCEAN



DAVIS PARK is actually made up of three different entities:

OCEAN RIDGE, LEJA BEACH, AND DAVIS PARK. These three places are generally grouped now-a-days under the name 'Davis Park.'

Davis Park is the easternmost residential community on Fire Island... a 200 boat slip marina; popular place with young singles and families; grocery store, public restrooms; a lifeguarded Town beach; even a Catholic church which was built in 1966.

There were a few cottages here in the 1920's but the place really developed after World War 2. On June 7, 1945, the *Patchogue ADVANCE* reported:

Leja Beach Nearly Ready for Opening

Preparations are near completion for the opening of Leja beach, adjoining Davis park, a Brookhaven town park on Great South beach opposite Patchogue. A casino 40 feet by 70, standing atop the dunes in the section of the new development east of the town property, overlooks both Great South bay and the Atlantic ocean. The exterior is finished in white asbestos shingling. There are large porches and a sun deck 80 feet long. A dance floor, lunchroom and bar will be part of the accommodations, probably ready for opening by June 22, the proprietors say.

A cottage colony is also in prospect, in the sections of the beach both eastward and westward of the public park, and one bungalow has already been erected in the western section. A motor ferry service three trips a day, is to be established between the town dock at Davis park and one on the Patchogue river side of the sand-spit.

In 1939, the Davis family of Blue Point donated to the Town of Brookhaven the strip of land between the ocean and the bay. Four of the developers were Lee Coffin, Ed Sembler, Joe Gerard and Al Brown: hence the name "LEJA."

The original Leja Beach Casino was floated across the Bay from Blue Point's "Pleasure Beach" at the end of Atlantic Ave. Davis Bros. Engineering Corp. Building Movers of Blue Point (founded in 1924) floated many, many early homes by barge over to Fire Island.

The original Leja Beach Casino opened in 1945.

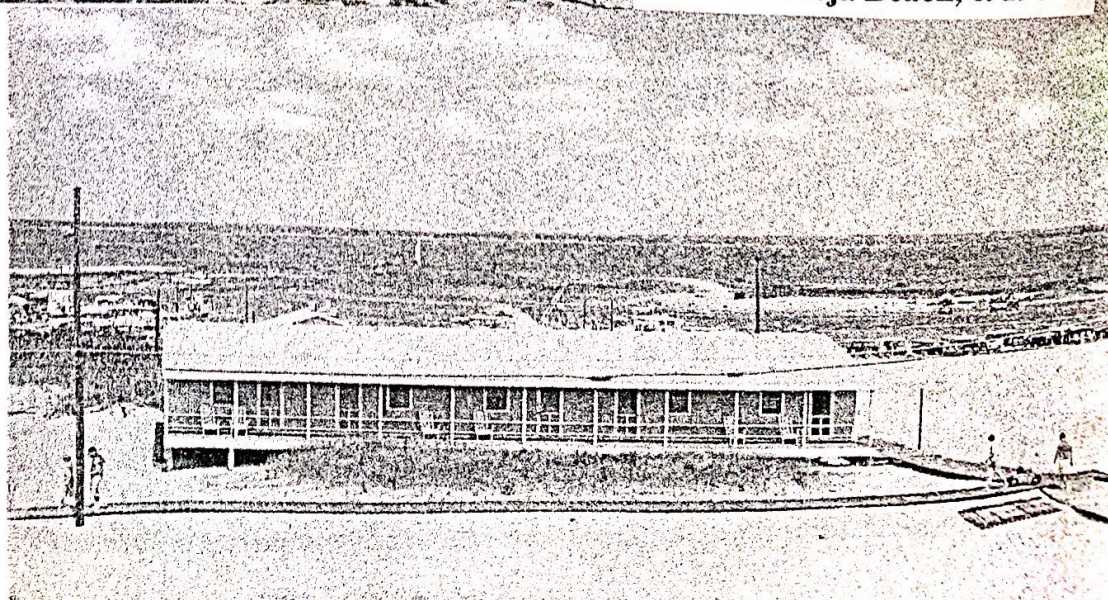
The Brookhaven Town Dock was also built in 1945 and ferry service from Patchogue began.

In the 1960's, electricity arrived in Davis Park.

During a terrible nor'easter in 1995, the Casino was destroyed. A new Casino was built on the Patchogue River & floated over to Davis Park in 1996.



Views of Leja Beach, c. 1970





DAVIS PARK (LEJA BEACH), FIRE ISLAND, NY

A view of the ocean-front bathing beach and some of the cottages in the Ocean Ridge section as seen from the roof of the Leja Beach Casino. (1964)



The old aerial view of DAVIS PARK, looking east, shows the Town of Brookhaven boat basin and the Ocean Ridge section in the background

WATCH HILL.... is located on the edge of the Otis Pike Wilderness area...it is a showcase for FINS; Visitors Center; Watch Hill is administered by the National Park Service... snack bar; 25-site campground; 188 boat slip marina; self-guided nature trails; salt marsh & tidal estuary programs; limited canoe trips; a lifeguarded beach on the ocean; picnic area; restrooms; showers. Watch Hill is accessible by ferry from Patchogue, by private boat, or on foot... a beautiful, fun and peaceful place for the whole family. And, of course, from Watch Hill visitors can hike into the Otis Pike Wilderness Area.

